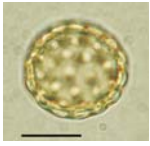




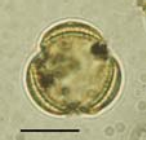
## Plantes steppiques climat sec et/ou froid



Chenopodiaceae



Chenopodium bonus-henricus



Asteraceae



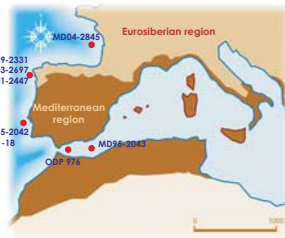
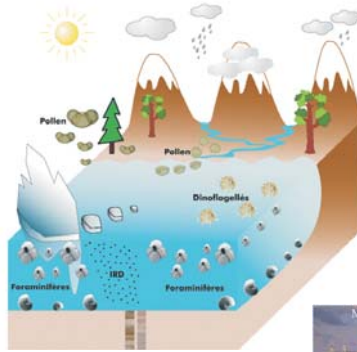
Artemisia arborescens



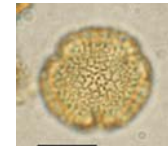
Gnetaceae



Ephedra major



## Arbres tempérés/chauds



Olea (olivier)



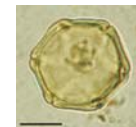
Olea europea



Quercus caducifolia (chêne)



Quercus robur



Alnus (alune)

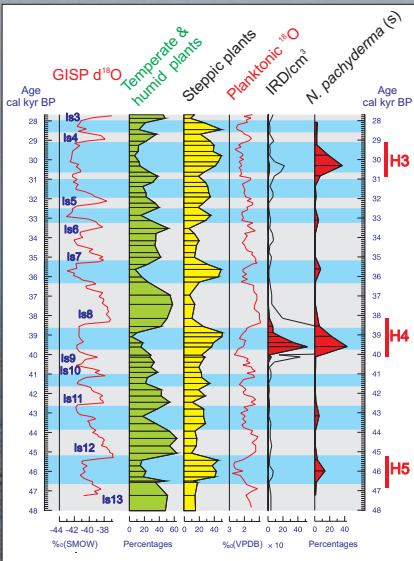


Alnus glutinosa

## La dernière période glaciaire (70.000-10.000 ans avant le présent)

### Groenland vs MD95-2042

Entre 50.000 et 28.000 ans avant le présent



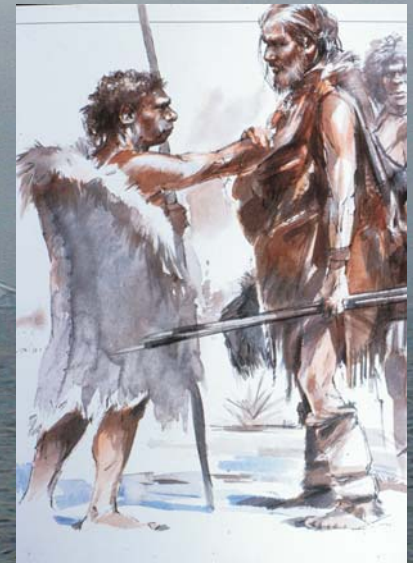
### Forêt ouverte méditerranéenne



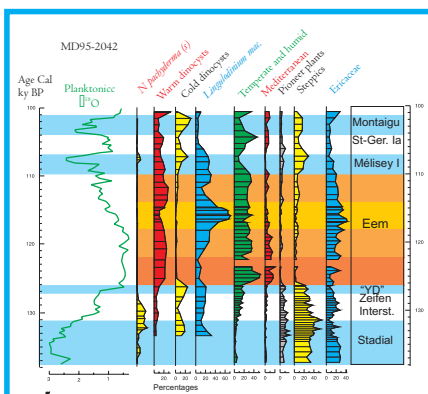
### Végétation semi-désertique



### L'extinction de l'homme de Néandertal il y a ~30.000 ans



### Il y a 125.000 ans



### Forêt méditerranéenne



### L'interglaciaire actuel

